

## Operation Educate

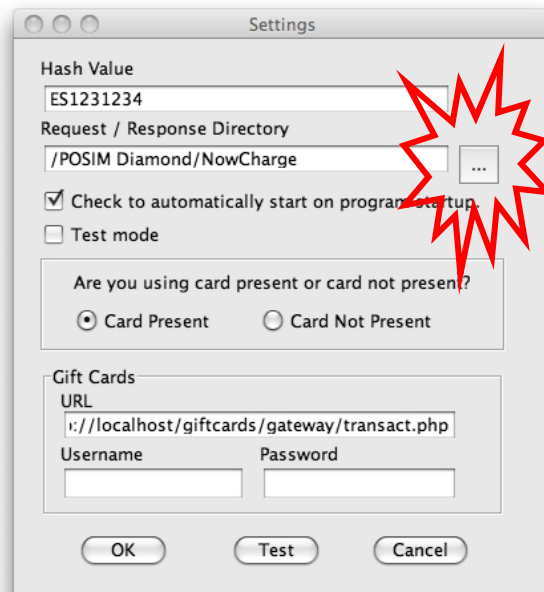
### Setting the NowCharge directories for Macintosh Error -120

When installing NowCharge, adding an additional seat or any other time your license and settings files are replaced or added to the NowCharge folder you will need to reset your directories in both the NowCharge application as well as in POS•IM.

Inside of NowCharge you will click “stop, window, settings” and this will take you to the settings screen.

Your Hash Value will be filled in correctly if you have your license and settings in the NowCharge folder. The Hash Value should correspond with your POSIM serial number. If nothing appears in the Hash Value field, call Ensign Systems at 800.553.9314.

To set the Request /Response Directory you need to click on the three dots right of the white box. You will set this directory to where your NowCharge folder is located.

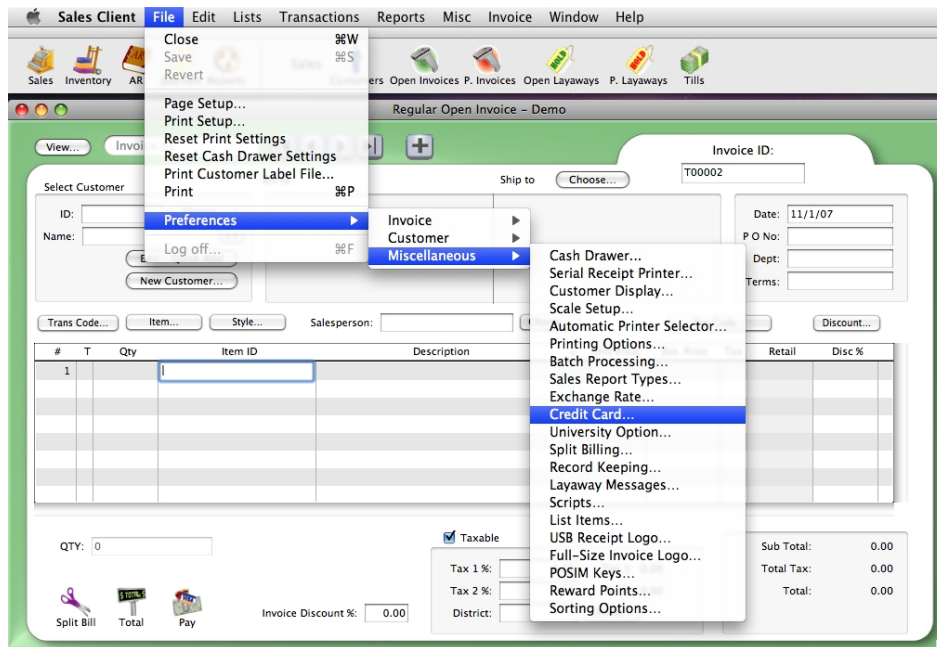


Now remember that NowCharge can be installed anywhere on the computer(s) or network(s). The directories above are just examples of the defaults and your directories may not match exactly.

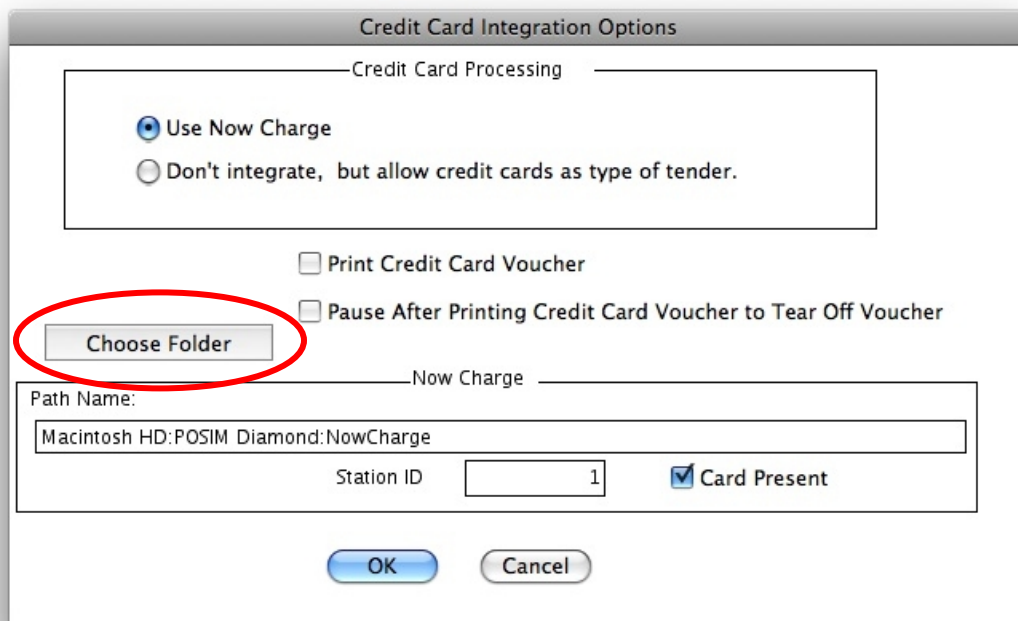
By default NowCharge on a Macintosh systems is usually;  
Macintosh HD/POSIM Diamond/NowCharge

Now inside of POSIM we want to set the directory to match those inside of NowCharge.

Click on File, Preferences, Misc, Credit Card.



Click on "Use NowCharge". There is a Path Name towards the bottom off the Credit Card Integrations Options screen, click on "Choose Folder" and this will let us set the directory inside of POS•IM. Set the to the same place you did inside of NowCharge.



Your directories should be set up correctly and you should be able to process credit card sales through NowCharge now.